

W White-Westinghouse

INTERNATIONAL

Factory Parts Catalog

Product No.	WRTS23V7CW7
Series	R134a
Color	white
Volts	220
Wiring Diagram	240583901
Owner's Guide	240432700
Market	Export
Energy Guide	240466721
Service Data Sheet	240506508
Installation Instructions	240568300

INTERNATIONAL
3 Parkway Center, Pittsburgh, PA 15220

Publication No.
5995452769
05/10/31
(EN/SERVICE/RF)
357

TOP-MOUNT REFRIGERATOR

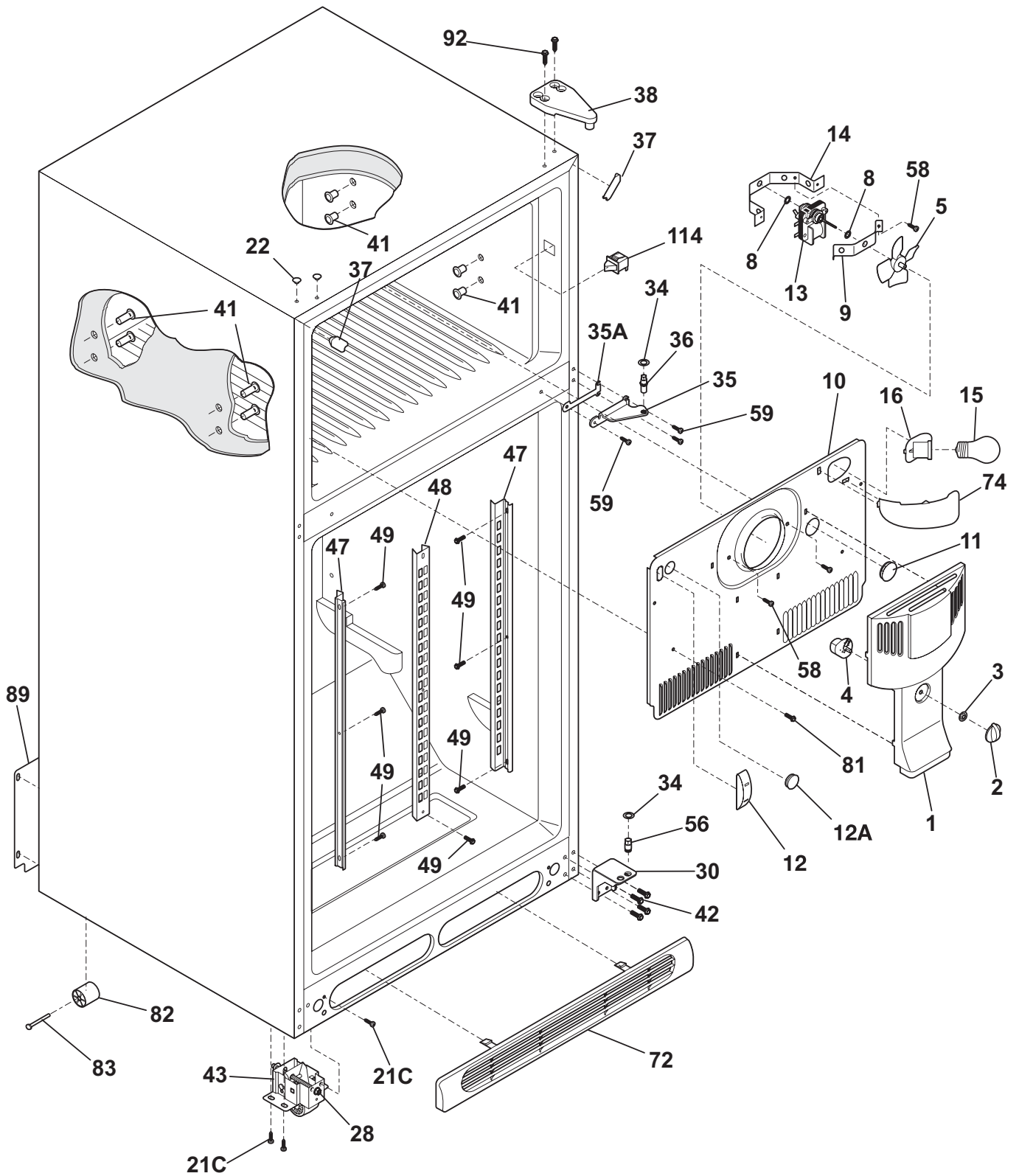
Model No.
WRTS23V7C

Copyright © 2005 Electrolux Home Products, Inc.
All rights reserved.

DOOR

POS. NO	PART NO.	DESCRIPTION
1 #	240514607	Gasket, seal, white, frzr door, magnetic
2 #	240514608	Gasket, seal, white, refr door, magnetic
7	240338310	Door-dairy, water blue
10	240381301	Plug-button, white, hinge brg hole, (2)
11	240450303	Door-frzr, white
12	240578101	Label-nameplate
13	240312403	Door Stop, white, ref
13A	240312404	Door Stop, white, frzr
14	240494001	Plug-button, white
15	240450425	Door-refr, white
18	218668001	Handle-door, white
21	240383401	Screw, truss hd quad, #10-16 x .500
21C	218252200	Screw, #8 truss hd, 10-32CA x 0.500
22	240527101	Bearing-hinge, natural color
25	5308000716	Dish, butter
26	3204522	Container, egg
27	240396302	Snugger, paddle type
27A	240396102	Retainer, tall bottle
37	215870629	Trim-handle, 2.47", white, w/satin AL band
37*	218676004	Band-decorative, satin aluminum, handle trim
37A	240468401	Trim-handle, 26.84", white, lower
37A*	218074001	Plug-button, white, refr door front, 1, lower
37A*	218906701	Lock-handle trim, stick-on
48	240338104	Bin-door, pseudo, white, bottom
48A	240338207	Bin-door, gallon, water blue
49	240495806	Bin-door, pseudo, frzr

CABINET



N05BAAABC4

CABINET

POS. NO	PART NO.	DESCRIPTION
1	240355402	Cover-fan
2	240367001	Knob-damper control
3	5303001028	Nut, push-on
4	240367401	Damper-fan cover
5 #	5308000010	Fan Blade, red, evaporator fan
8	5300157666	Bushing-motor mtg, (2)
9	5303292396	Bracket-motor mtg, front
10	240313609	Cover-evap coil, w/light
10*	240568606	Seal-coil cover
10*#	240524801	Wiring Harness, freezer section, with light
11	5303208309	Plug-hole, factory test
12	241557601	Plug-ice maker harness, rectangular
12A	240374401	Plug-wtr inlet tube, round, 1"
12A*	241586701	Plug-foam-wtr-inlet, round
13 #	240419702	Motor, evaporator fan, 220/240 V
13*	218931001	Clamp-motor wiring, nylon, w/adhesive tape
14	5303292397	Bracket-motor mtg, rear
14*	5303274237	Screw, hex washer head, 8-32CA x 0.500, motor bracket
15	218095500	Light Bulb/Lamp
16	218971501	Socket-light/lamp
21C	218252200	Screw, #8 truss hd, 10-32CA x 0.500
22	215774901	Plug-button, white, upr hinge holes
28	240335501	Bolt-roller adj, hex washer head, 1/4-20 x 4.020, (2), special
30	240314001	Bracket-lower hinge, zinc
34	240311303	Washer, hinge, nylon, (2)
35	240313801	Bracket-ctr hinge, zinc
35A	240336802	Spacer-hinge, center
36	240516401	Pin-center hinge
37	240337601	Trim-cabinet corner, white, (2)
38	241622601	Hinge-up-plastic-wht, plastic, white
41	5308009759	Grommet, shelf mtg, 1.25", LH, (4)
42	240578901	Screw-hinge mtg, hex head, 1/4-20 x 5/8
43	240335003	Roller Assy, adjustable, front, (2)
47	218233300	Channel-shelf mtg, side, (2)
48	5303292395	Channel-shelf mtg, center
49	218362500	Screw, hex washer head, 8-18AB x 1.250, spacer, (2)
56	240516501	Pin-lower hinge
58	5303001343	Screw, hex washer head, 8-15A x 0.500
59	240442701	Screw-#10-32 X 3/4, zinc
72	240368205	Grille/Kickplate, white
74	240354301	Shield-light, frzr
81	5308016566	Screw, hex washer head, 8-15A x 0.625, low profile
82	5304418225	Roller, compressor base, rear, (2)
83	5303316859	Rivet, flat head, 1/4 OD x 1-3/4, roller pin
89	240326119	Cover-access, with label
89*	241500301	Screw, hex washer head, 8-18AB x 0.500
92	216850900	Screw, hex washer hd, 1/4 x 7/8, hinge mtg
114#	240505801	Switch, light/lamp
*	5303305324	Paint, touch-up, white

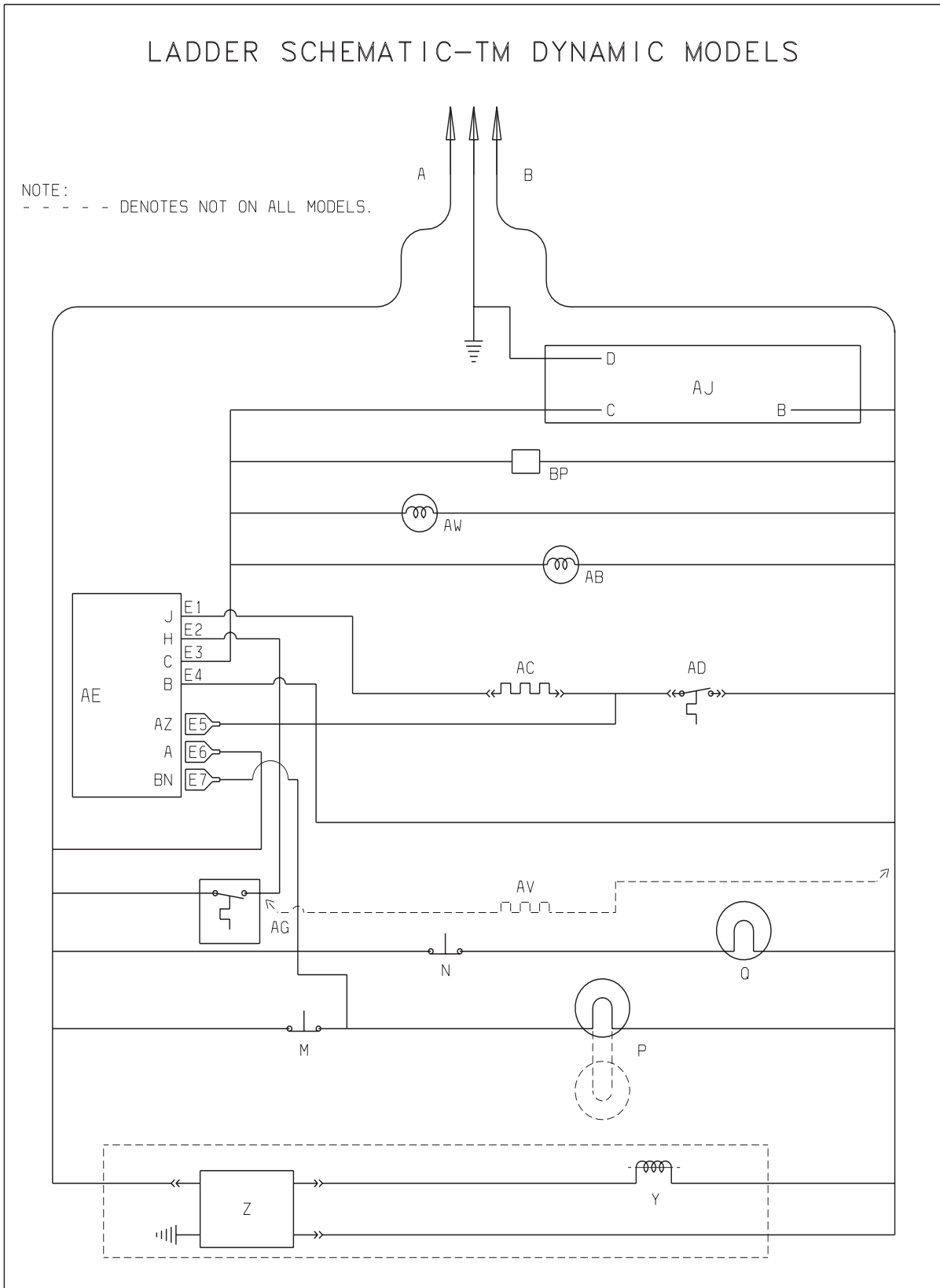
SHELVES

POS. NO	PART NO.	DESCRIPTION
10	215667501	Tray, ice cube, plastic
11	240358006	Shelf, freezer, full-width, wire
11*	5303299664	Spacer, shelf
12	240545901	Diffuser-air, top
13	240362601	Diffuser, air, bottom
14#	241554901	Switch-light/lamp
15	218814400	Light Bulb/Lamp
16	240433702	Socket-light/lamp
17	240368101	Control Box
17*#	240375501	Wiring Harness, control box
18	240360801	Knob, temp control
21 #	5304446865	Control-temperature
22A	240468201	Tube, sensor sleeve, 31 inch, plastic, white
23	240545402	Control-defrost, adaptive timer, 220/240 V, PC board
23*	5303001259	Screw-timer mtg, pan hd, 6-20 x 0.438, (2)
24	240355206	Shelf, cantilever, half width, fixed, "spill safe"
24B	240408901	Shelf, cantilever, full width, fixed, "spill safe"
25	240364751	Cover-crisper pan
25B	241613501	Control-humidity, RH
25C	241613502	Control-humidity, LH
26	240343805	Pan-crisper, water blue, (2)
31	240530808	Pan-meat
34	240385201	Container, ice bin
42	240356501	Track, meat pan hanger, RH
42	240365401	Track, meat pan hanger, LH
47	240443329	Insert-pan cover, glass
61	215781501	Shelf, ice tray mount, wire
66	5304402116	Rack-wine
75	240412701	Shield, light
81	5308016566	Screw, hex washer head, 8-15A x 0.625, low profile
123	215005100	Screw, hanger/rlr mtg, 8-10 x 0.438

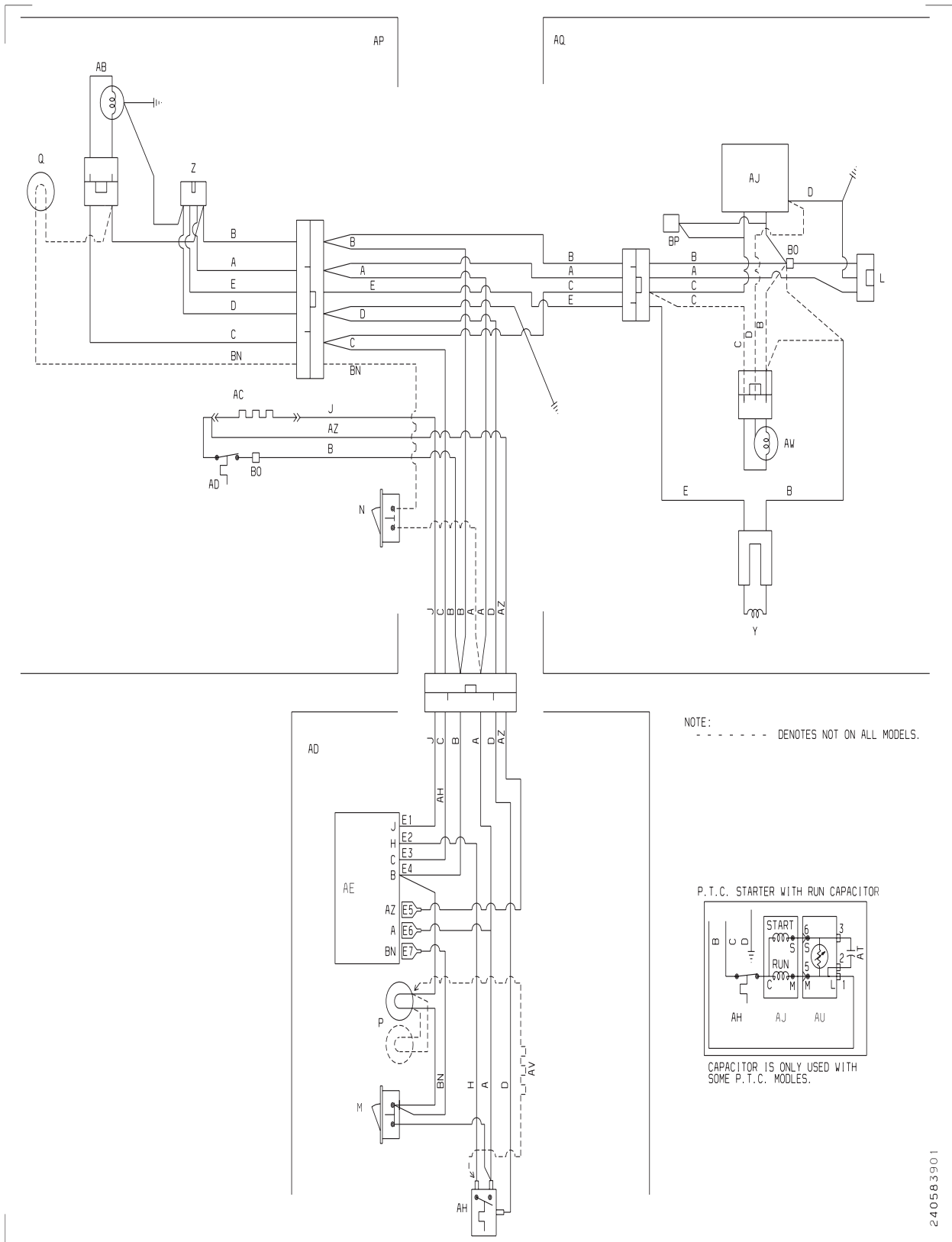
SYSTEM

POS. NO	PART NO.	DESCRIPTION
1	240444401	Condenser, dynamic
4 #	218944001	Drier-filter, R134a System
6 #	240449501	Cord-electric power
6*	240447101	Bracket, strain relief
6*	240447201	Clamp, strain relief
6*	240451501	Screw, ind hex wshr hd, 8-32 x 0.375, thread rolling
6*	241626401	Harness-wiring, machine compt
6* #	240375501	Wiring Harness, control box
6* #	240524801	Wiring Harness, freezer section, with light
14 #	240356218	Defrost Heater, 220 V
15 #	5303918274	Evaporator Kit
16	5308000110	Strap-evap/heater, aluminum, (2)
17	241551801	Trough-drain
20	241551902	Insulation Block
21 #	5303918202	Thermostat-defrost, kit
22	241602001	Base-compressor
22*	218252200	Screw, #8 truss hd, 10-32CA x 0.500
23	218513300	Grommet-compr mtg, (4)
25	240491501	Screw-compressor mtg, 1/4-28 x 1.16, shoulder, typ CF
26	241637401	Pan-defrost
29 #	5303918318	Compressor, w/electricals
30	241524610	Starter-PTC
32	240553401	Clamp, elec cont mtg, compressor
34	240405201	Grommet, rubber, black, cond tube/wire
45	5308016566	Screw, hex washer head, 8-15A x 0.625, low profile
55 #	218909908	Capacitor, run
57	240542601	Clip-wiring harness
58	218897002	Screw, hex washer head, 8-32 x 0.375
59	5304430246	Bracket-cond motor assy
59*	240346701	Tape-foam seal, shroud
59*	240359401	Screw-fan shroud, (2)
60 #	240525403	Motor-condenser fan
61 #	240524101	Fan Blade, galv steel, condenser fan
82	5304418225	Roller, compressor base, rear, (2)
83	5303316859	Rivet, flat head, 1/4 OD x 1-3/4, roller pin
84	240597301	Tube-drain, lower
85	240553501	Tube-connector, suction
86	240409302	Spacer-cond tube, black
*	240396801	Clamp, tube/wiring, nylon, black/natural
* #	5303918210	Heat Exchanger Kit, suction line
* #	5303918239	Hot Tube Repair Kit, 220 V, service

WIRING SCHEMATIC



WIRING DIAGRAM



240583901